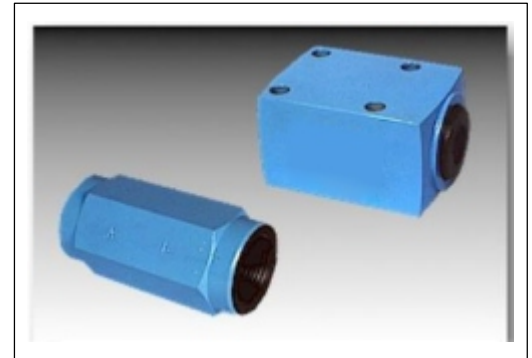


Description

Check valve models C*** allow free flow in the direction from Port A to Port B and offer leak free closure in opposite direction.

Two standard mounting styles are available:

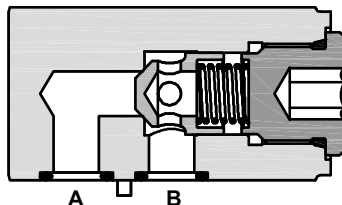
- Line mounting C*T.
- Subplate mounting C*S.



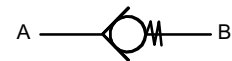
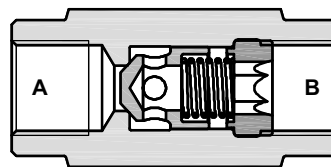
Section

Hydraulic symbol

Subplate body



Threaded body



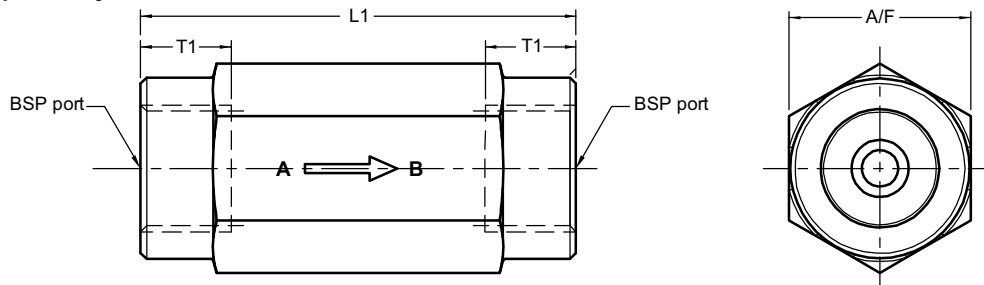
Technical specifications

Construction	:	Seat type valve.
Mounting style	:	Threaded port or subplate mounting.
Mounting interface	:	Factory standard.
Mounting position	:	Optional.
Flow direction	:	Free flow from A to B, Leakfree closure in opposite direction.
Cracking pressure	:	0, 0.5, 1.5, 3 and 5 bar.
Working pressure	:	315 bar for Ports A and B .
Hydraulic medium	:	Mineral oil.
Temperature range	:	-20°C to + 80°C.
Viscosity range	:	10 cSt to 380 cSt.
Fluid cleanliness required	:	ISO 4406 20/18/15 or better.
Max. flow handling capacity	:	Refer graphs.
Mass approx.		
(Subplate mounting)	:	Model : 06 08 10 15 20 25 30
		in Kg : 0.1 0.15 0.3 0.45 0.9 2 2.4
(Line mounting)	:	Model : 06 10 20 30
		in Kg : 0.3 1 2.4 7.2

Unit dimensions

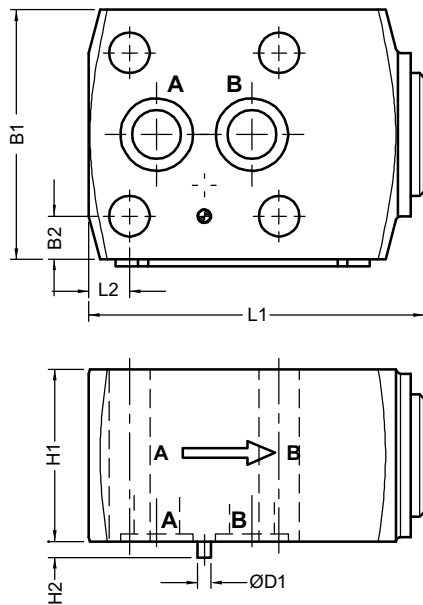
Threaded port body

Dimensions in mm.

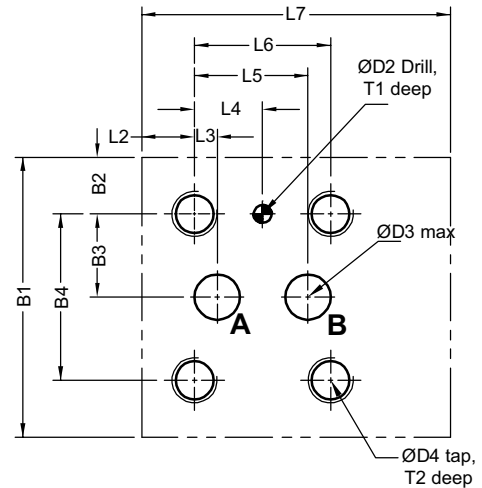


Size	06	08	10	15	20	25	30
BSP Port	G1/4	G3/8	G1/2	G3/4	G1	G1 1/4	G 1 1/2
L1	58	58	72	85	98	120	132
T1	12	12	14	16	18	20	22
A/F	19	24	30	36	46	60	65

Subplate mounting body



Subplate body mounting interface



Size	L1	L2	L3	L4	L5	L6	L7	B1	B2	B3	B4	H1	H2	ØD1	ØD2	ØD3 max	ØD4	T1	T2	Valve fixing S.H.C Screws Class 12.9	Tightening Torque Nm
06	51	7	3	9	15	18	45	37	7.5	11	22	26	3.5	3	4	6	M6	5	12	M6 x 35L 4 nos	16
10	74	9	6	16.5	27	33	68	55	9.5	18	36	38	3.5	3	4	11	M8	5	14	M8 x 50L 4 nos	39
20	102	10	10	27.5	45	55	95	70	10	25	50	55	5.5	6	7	22	M10	8	19	M10 x 70L 4 nos	77
30	139	15	20	42.5	65	85	132	100	12.5	37.5	75	82	5.5	6	7	31	M12	8	22	M12 x 100L 4 nos	135

Ordering code

C 06 T 1 03

Check valve

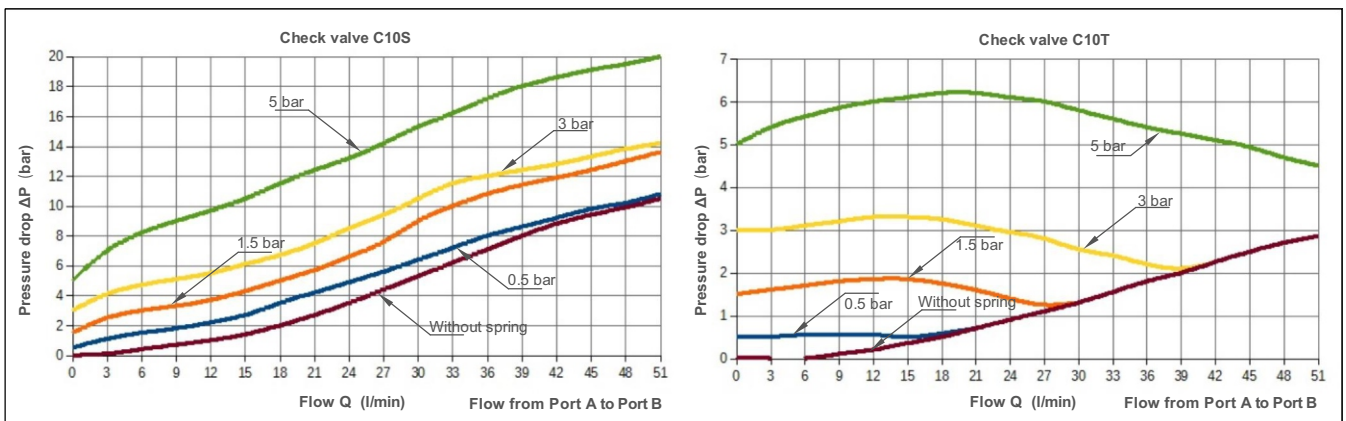
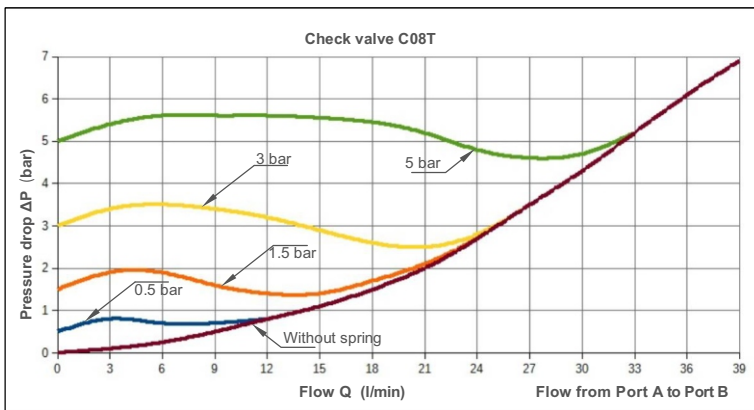
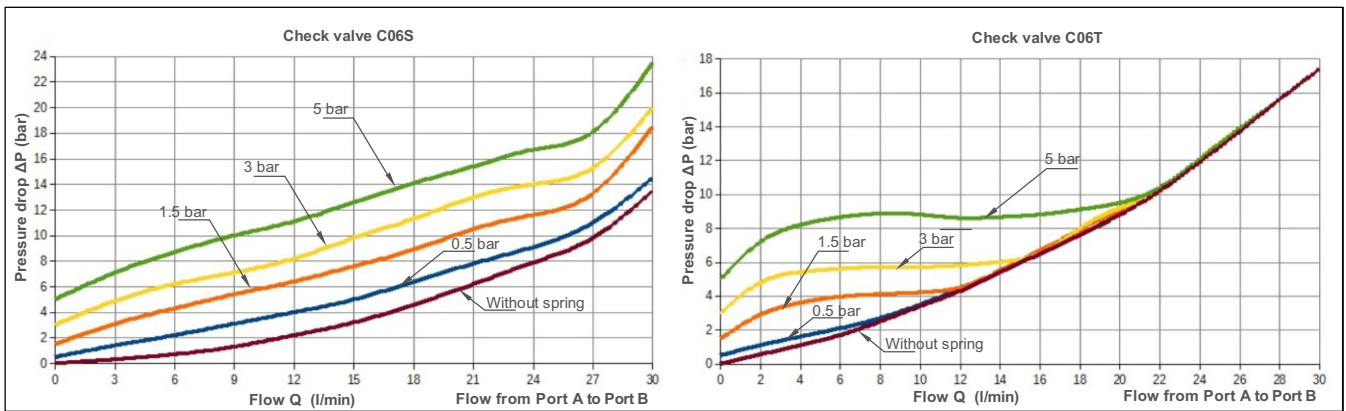
Port size		
Threaded body	Subplate mounting	Size
G1/4	Ø 06 max	06
G3/8	---	08
G1/2	Ø 11 max	10
G3/4	---	15
G1	Ø 22 max	20
G1 1/4	---	25
G1 1/2	Ø 31 max	30

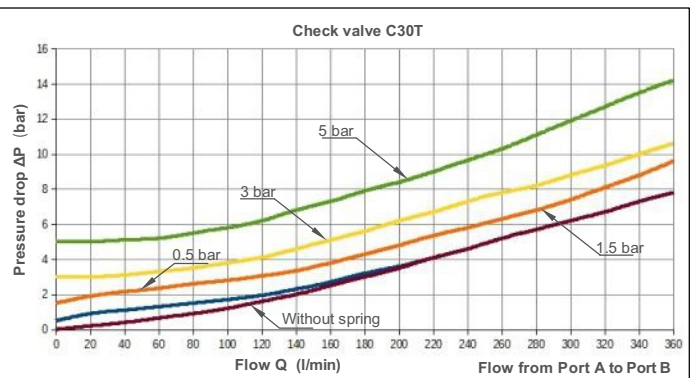
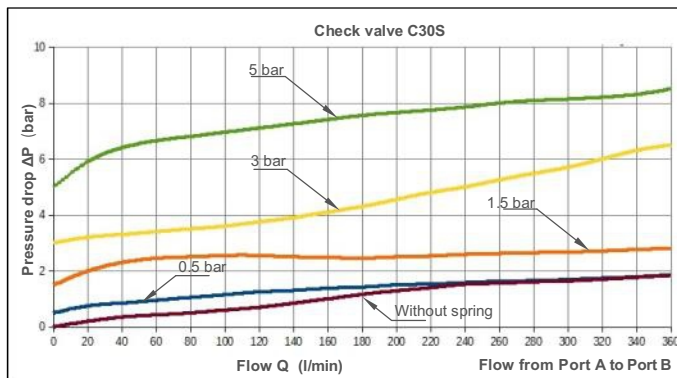
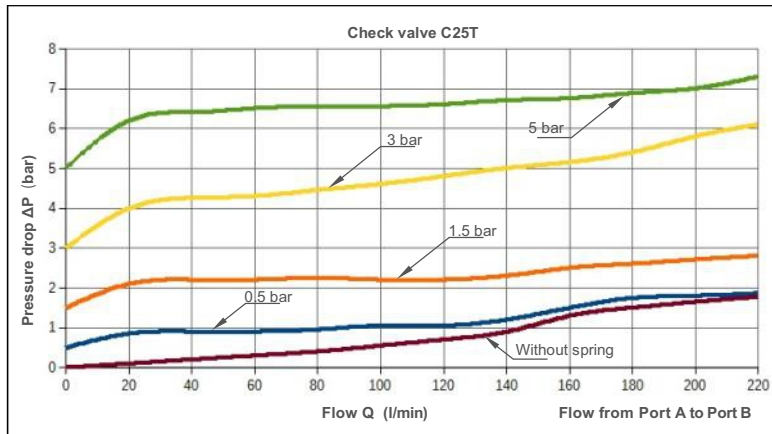
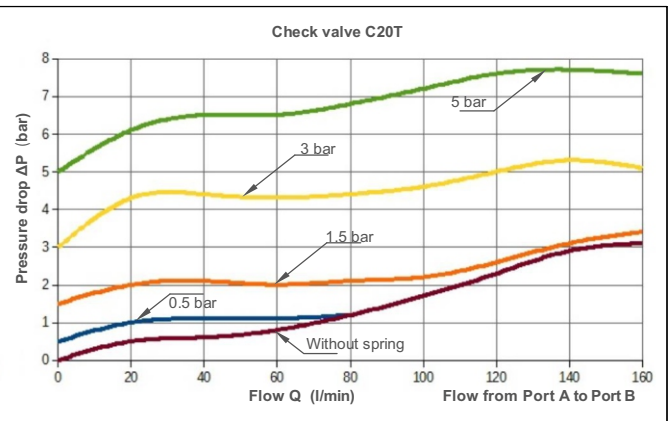
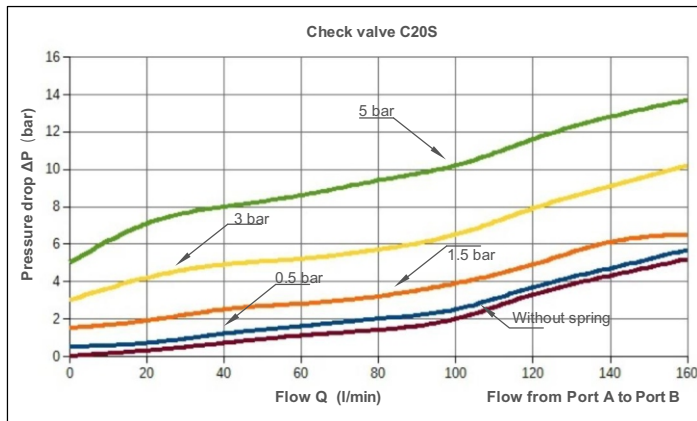
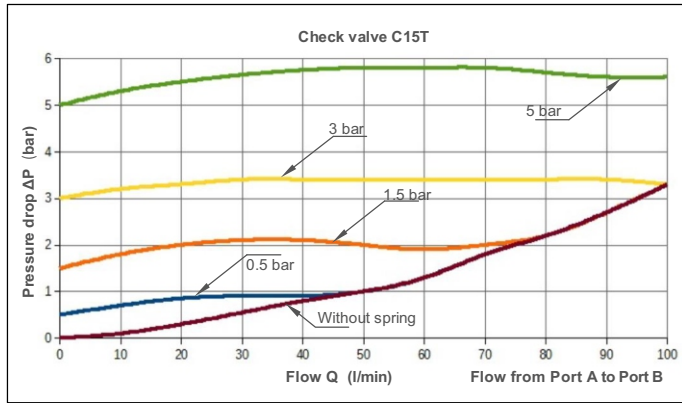
Design code subjected to Change .
installation dimensions remain
same for design code 09 thru 19.

Cracking pressure (bar)				
0	1	2	3	4
0.0	0.5	1.5	3.0	5.0

S	Subplate mounting body
T	Threaded port body

Performance graph





All rights reserved.
Subject to change without prior notice.
Due to continuous improvement in the design of the product, the actual product supplied may look different than shown above.
For critical applications, please ask for certified installation drawing.